



TL-2236MAX-PLM

Edition 3

April 2024

# Air Impact Wrench

2236QTiMAX Series

---

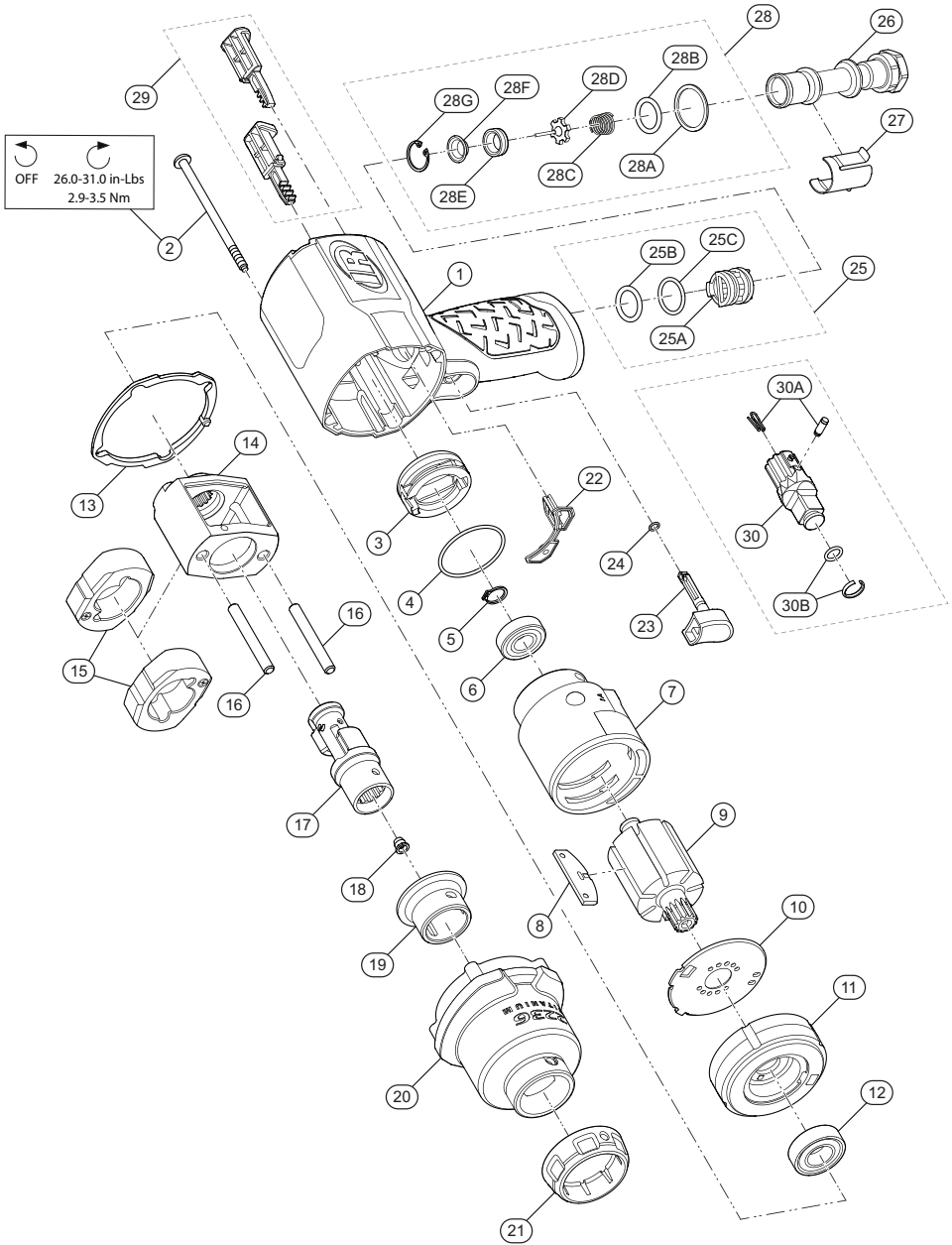
## Parts Information



Save These Instructions

 **Ingersoll Rand**<sup>®</sup>

**2236QTiMAX Series, Air Impact Wrench - Exploded View**



(Dwg. TL-2236MAX-PLM-1)

## 2236QTiMAX Series, Air Impact Wrench - Parts List

Item	Part Description	Part Number	Item	Part Description	Part Number	
*	Housing Assembly		*	Inlet Bushing Assembly	2135-D565A	
	for model 2236QTiMAX	TA-2236QMAX-A040	26	Inlet Bushing	---	
	for model 2236QTiMAX-G	TA-2236-A040-GN	27	Inlet Clip	2131-57	
	for model 2236QTiMAX-R	TA-2236-A040-RD	28	Inlet Parts Kit	2135-K303	
	for model 2236QTiMAX-O	TA-2236-A040-OR	28A	Washer	---	
1	Housing	---	28B	O-Ring, Seal	---	
22	Gasket, Motor	---	28C	Throttle Spring	---	
25	Reverse Valve Assembly	---	28D	Throttle Valve	---	
29	Button Kit	---	28E	Valve Seat	---	
2	Screw, Hammer Case (4 required)	2135-638	28F	Seat Support	---	
			28G	Retainer	---	
*	Power Regulator Assembly		29	Button Kit		
	for model 2236QTiMAX	TD-2236-249RD		for model 2236QTiMAX	TK-2236-075RD	
	for models 2236QTiMAX-G, 2236QTiMAX-R, and 2236QTiMAX-O	TD-2236-249BK		for models 2236QTiMAX-G, 2236QTiMAX-R, and 2236QTiMAX-O	TK-2236-075BK	
3	Power Regulator	---	*	Forward Button	---	
4	O-Ring, Power Regulator	---	*	Reverse Button	---	
5	Retaining Ring	2131-6	*	Anvil Assembly (replaceable)		
6	Ball Bearing (Cylinder)	2131-97		for models 2236QTiMAX, 2236QTiMAX-G, 2236QTiMAX-R, and 2236QTiMAX-O (standard)	A41H	
7	Cylinder	TP-2236-003		for model 2236QTiMAX-2 (extended)	EA42H	
† 8	Vane Pack (set of 7)	2235-42-7		for model 2236QTiMAX (Pin)	AP41H	
9	Rotor	2235-53		30	Anvil	---
10	Wear Plate	TP-2236-011X		30A	Anvil Retainer Kit (all Splined Anvils)	TK-2236-716
11	End Plate	TP-2236-011		† 30B	Socket Retainer Kit (1/2" ring-type)	
12	Ball Bearing (End Plate)	2235-97			for models 2236QTiMAX, 2236QTiMAX-G, 2236QTiMAX-R, 2236QTiMAX-O, and 2236QTiMAX-2	2125QTI-K425
† 13	Hammer Case Gasket			† *	Socket Retainer Kit (1/2" pin-type)	
	for model 2236QTiMAX	TP-2236-036RD			for model 2236PQTiMAX	2125PTI-K425
	for models 2236QTiMAX-G, 2236QTiMAX-R, and 2236QTiMAX-O	TP-2236-036BK		*	Tune-up Kit	TK-2236-GTK
*	Hammer Mechanism Kit	2235-THK1		4	O-Ring, Power Regulator	---
14	Hammer Frame	---	5	Retaining Ring	---	
15	Hammer (2 required)	2235-724	6	Ball Bearing (Cylinder)	---	
16	Hammer Pin (2 required)	---	8	Vane Pack (set of 7)	---	
*	Anvil Assembly (internal)	TD-2236-526SD	12	Ball Bearing (End Plate)	---	
17	Anvil	---	13	Hammer Case Gasket	---	
18	Grease Fitting	131-188	22	Gasket, Motor	---	
*	Hammer Case Assembly	TD-2236SD-727Ti	24	O-Ring, Trigger	---	
19	Bushing, Hammer Case	TP-2236-641SD	25B	O-Ring, Reverse Valve (top-black)	---	
20	Hammer Case	---	25C	O-Ring, Reverse Valve (bottom-blue)	---	
21	Retaining Pin Guard		28	Inlet Parts Kit	---	
	for model 2236QTiMAX	TP-2236SD-961	*	Grease		
	for models 2236QTiMAX-G, 2236QTiMAX-R, and 2236QTiMAX-O	TP-2236SD-961BK	*	Boot, 2236Max Series	2236M-BOOT	
† 22	Gasket, Motor	TP-2236-283	*	DXS Tool Kit - 10 Pack	TK-DXS-TOOL-10	
†	Trigger Assembly		*	Inlet Clip Removal Tool	2131-322	
	for model 2236QTiMAX	2135-D93	*	Socket Retainer Kit (1/2" ring-type) - 10 Pack	2125QTI-K425-10	
	for models 2236QTiMAX-G, 2236QTiMAX-R, and 2236QTiMAX-O	2135-D93B	† *	Air Care Kit (grease gun, grease, and oil)	105-LBK1	
23	Trigger	---	*	Grease (replacement tube for - LBK1)	105-4T	
24	O-Ring, Trigger	---	*	Air Tool Oil (4 oz. bottle)	10Z4	
25	Reverse Valve Assembly	2131-A329	*	Grease (1 lb can)	105-1LB	
25A	Reverse Valve	---	*	Grease (8 lb can)	105-8LB	
25B	O-Ring, Reverse Valve (top-black)	---	*	Grease Gun	R000A2-228	
25C	O-Ring, Reverse Valve (bottom-blue)	---				

\* Indicates not illustrated.

† To keep downtime to a minimum, it's desirable to have certain repair parts on hand. We recommend that you stock one (pair or set) of each part indicated by a (†) for every four tools in service.

---

## Parts and Maintenance

When tool life has expired, it is recommended that the tool be disassembled, degreased and parts separated by material for proper recycling.

Tool repair and maintenance should only be carried out by an Authorized Service Center.

Refer all communications to the nearest **Ingersoll Rand** office or distributor.

---

## Related Documentation

Manuals can be downloaded from **ingersollrand.com**

For additional information, refer to:

Product Safety Information Manual 04580916

Product Information Manual TL-2236MAX-PIM

CE-Declaration of Conformity TL-2236MAX-DOC

UK-Declaration of Conformity TL-2236MAX-DOC-UK

**Notes:**

---

---

**Notes:**

**Notes:**

---

[ingersollrand.com](https://www.ingersollrand.com)

© 2024 *Ingersoll Rand*

